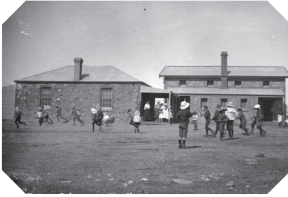


# SILVERTON MUSEUMS

## 9 SILVERTON SCHOOL EDUCATIONAL MUSEUM

Original classroom of the Silvertown School, features a range of educational memorabilia and original school resources as well as entertaining stories and photographs from the district.



\$ Adult \$2.50 | Child \$1 | Fam \$7

A Loftus St, Silvertown

P 08 8088 7481 | 0448 882 550

Mon, Wed, Fri - Sun 9.30am -3.30pm

## 18 SILVERTON GAOL MUSEUM

Experience life 'inside' the original Silvertown Gaol and explore the massive collection of Silvertown and Broken Hill social history, photographs, documents and significant objects on display.



\$ Adult \$4 | Con/Student \$3,

Child (5-12yrs) \$1,

Child under 5 free

A Burke St, Silvertown

P 08 8088 5317

Open Daily 9.30am-4pm (Closed Christmas Day)

# GENEALOGY

## 11 BROKEN HILL FAMILY HISTORY GROUP INC.

Community history resource centre specialising in family history and cemetery enquiries.

\$ FREE (research fees apply)

A Crystal Street Railway Station

P 08 8088 1266 or 08 8088 1321 ah

Mon, Tues, Thurs & Fri  
10am-3pm, Sat 1pm-4pm



**OUTBACKMUSEUMS.COM.AU**

Map not to scale.  
For a detailed map please visit  
[outbackmuseums.com.au](http://outbackmuseums.com.au)

**LOOK FOR THE RED BANNERS**



Information and prices listed in this brochure are subject to change without notice. Check the website, [outbackmuseums.com.au](http://outbackmuseums.com.au) for up-to-date information.

## BROKEN HILL

# OUTBACK MUSEUM STORIES

YOUR GUIDE TO BROKEN HILL & SILVERTON MUSEUMS



**OUTBACKMUSEUMS.COM.AU**

A Journey of Discovery, Diversity and Survival  
in Broken Hill & Silvertown

# WELCOME TO OUTBACK MUSEUM STORIES

The Broken Hill & Silverton region boasts a wealth of history - but you can't find it all in one place. You need to visit multiple sites to get the full picture. These museums tell so many amazing Australian stories covering a range of themes including: Discovery, Diversity and Survival.

The Outback Museum Stories guide helps you plan your trip and discover why Broken Hill has been named Australia's first National Heritage Listed City. Be sure to check out the website to get a taste of the stories, objects, pictures and documents that provide such a rich window into the history of Australia's outback pioneering past.

## BROKEN HILL VISITOR INFORMATION CENTRE

The friendly staff here can assist you with all your local travel needs including the best way to incorporate your museum visits into a fun Broken Hill and Silverton itinerary.

**A** Corner of Bromide & Blende Streets, Broken Hill  
**P** 08 8080 3560 | **E** [tourist@brokenhill.nsw.gov.au](mailto:tourist@brokenhill.nsw.gov.au)  
**O** Open daily

**W** [brokenhillaustralia.com.au](http://brokenhillaustralia.com.au)

## OUTBACKMUSEUMS.COM.AU

Front cover image: Kangaroo Race, Silverton Tramway Company (STC) Annual Picnic. Silverton 1912, image courtesy of Sulphide St Railway & Historical Museum. Archival photos courtesy Outback Museum Stories sites.

## BROKEN HILL MUSEUMS

### 1 ALBERT KERSTEN MINING & MINERALS MUSEUM (GEOCENTRE)

Interactive geological museum exploring the discovery, global significance, and geological diversity of Broken Hill's famous Line of Lode. Home to the Silver Tree.

**\$** Adult \$7 | Con \$5 | Fam \$16

**A** Cnr Crystal & Bromide Sts

**P** 08 8080 3500

**O** M-F 10am-4:45pm | W/Ends 1pm-4:45pm

(Closed 24th, 25th and 26th December inclusive)



### 2 SULPHIDE STREET RAILWAY & HISTORICAL MUSEUM

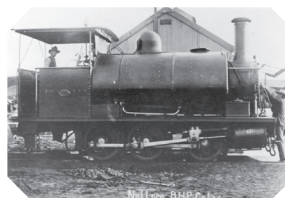
Explore a broad range of Broken Hill history featuring the Silverton Tramway story and local rail history, Migrant Museum, Hospital Museum, Minerals Display and much more.

**\$** Adult \$5 | Con \$4 | Fam \$12

**A** 230 Blende St

**P** 08 8088 4660

**O** Open Daily 10am-3pm (Closed Christmas Day)



### 3 SYNAGOGUE OF THE OUTBACK MUSEUM

Custodians of the Jewish Story of Broken Hill incorporating a diverse museum, research centre and community archives.

**\$** Donations welcome

**A** 165 Wolfram St

**P** 08 8088 7448 | 0439 680 944

**O** Mon, Wed & Sun 10am-3pm



### 4 WEST DARLING MACHINERY PRESERVATION SOCIETY

Workshop and displays for preservation society restorations incorporating rare steam and water engines in working order and local historical memorabilia.

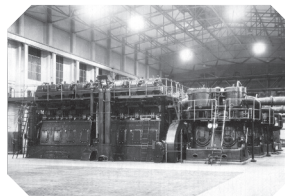
**\$** FREE, donations welcome

**A** The Conservation Centre

479 Crystal St

**P** 08 8087 8226 | 0427 095 216

**O** Thurs & Sun 9am-12pm & by appointment



### 5 BROKEN HILL MOSQUE MUSEUM

The only surviving Mosque in Australia built by Cameleers, includes original Prayer Room and museum displays featuring stories and objects from the Afghan Cameleers and Mosque.

**\$** Gold coin

**A** Cnr Williams & Buck Sts

**P** 08 8088 3187

**O** Sun 2pm-4pm & by appointment



### 6 OUTBACK ARCHIVES

Located in the Broken Hill City Library, the Archives house much of the city's most important documents, newspapers, photographs, publications, and other significant archival treasures.

**\$** FREE (copying/printing fees)

**A** Broken Hill City Library | Blende St

**P** 08 8080 3460

**O** Mon-Thurs, 9am-1pm & 2pm-5pm | Fri 9am-1pm



### 7 WHITE'S MINERAL ART & MINING MUSEUM

Mining and mineral art museum telling the story of mining history in the area with an emphasis on the unique minerals of the region. (Includes guided tour & entry to Doll Museum).

**\$** Adult \$7.50 | Con \$7 | Child \$5

**A** 1 Allendale St

**P** 08 8087 2878

**O** Daily 9am-5pm



### 8 BELLS MILK BAR & MUSEUM

Intact 1950s Milk Bar with roots in 1890s cordial making. Features traditional drinks from handmade syrups and cordials, and attached milk bar and café museum.

**\$** Optional Gold Coin Donation

**A** 160 Patton Street

**P** (08) 8087 5380

**O** 10am-5:30pm 7 Days



**Museums  
& Galleries  
NSW**

This project is supported by Arts NSW's VIM Grant Program, a devolved funding program administered by Museums & Galleries of NSW on behalf of the NSW Government.